



IFRC Migration  
Unit

***NATURAL DISASTERS AND MOBILITY – DATA  
COLLECTION AND ANALYSIS  
IFRC perspective and response to Natural  
Disasters and Mobility***

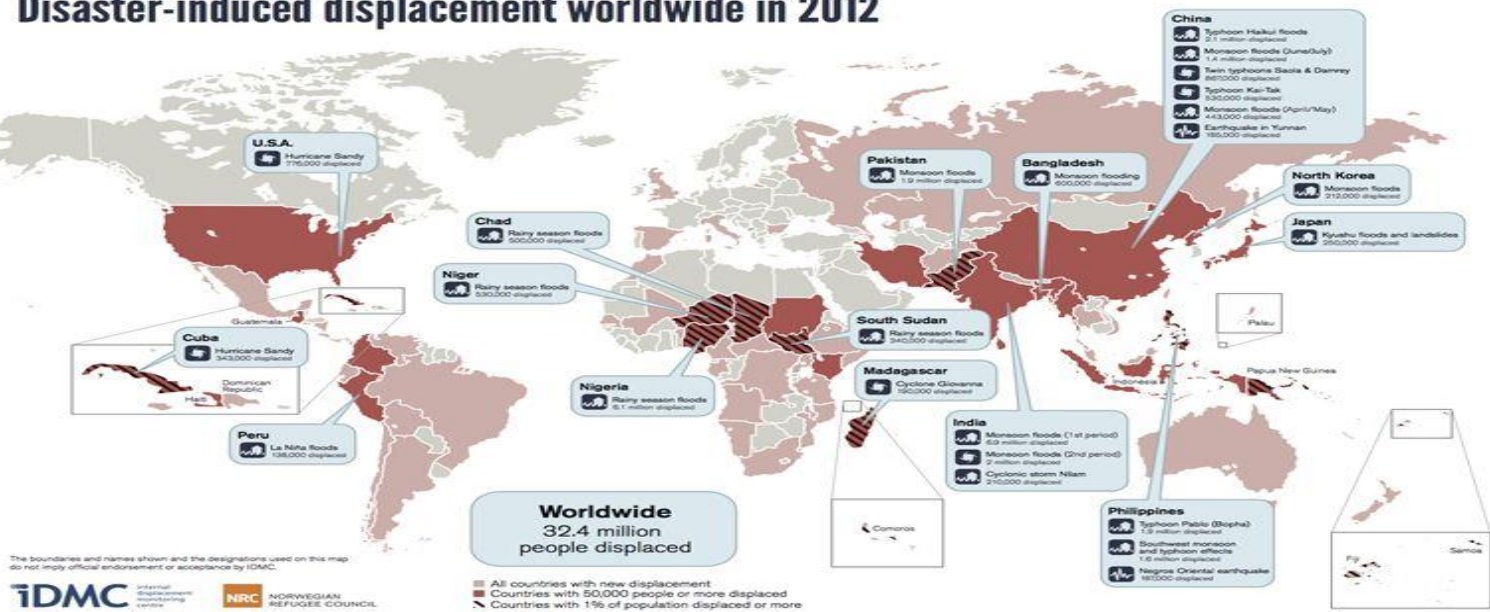
**Dakar, September 2013**

Norbert Allale, Regional Disaster and Risk Management Coordinator

# Disaster –induced displacement worldwide in 2012

- According to IDMC, during 2012, an estimated **32.4 million people** were displaced worldwide by disasters related to hazards such as floods, storms and earthquakes- almost double the number of people displaced in 2011

Disaster-induced displacement worldwide in 2012



# *The importance of Data collection*



According to the IDMC 2012\* report a **critical component to improving community resilience and government responses to disasters is better data collection** on people who have been displaced.

- **“Currently the information available is biased**, often only focusing on the most visible people who take shelter in official evacuation sites or camps”.... **“We need to know more about those who seek refuge with families and friends**, people who are repeatedly displaced by smaller disasters, or those who are stuck in prolonged displacement following a disaster– not just those that make headlines.” (Clare Spurrell, Chief Spokesperson for IDMC)

IDMC' (2012) *“Global Estimates 2012: People displaced by disaster”* report

# *IFRC Data collection & Information management*

Information management:

- **Saves lives through early warning**
- **Reduces suffering in the wake of disasters**, by providing tracing services, concise information on assistance packages, or clearly indicating where and when shelter will be provided
- **Promotes better media coverage** of the world's neglected disasters so that global assistance might be more equitably allocated



Information management in disasters relies on the extended network of the IFRC and field-based staff to build on and maximize the use of existing expertise, access, and experience.

# Disaster Management Information System (DMISI) (i)

- The DMIS is a **web-based working tool** made accessible only to RCRC staff;

Since 2004, DMIS is collecting data from DMIS field reports, Information bulletins, DREF operations, Emergency Appeals and updates in order to have a better picture of the Red Cross and Red Crescent responses to disaster.

From DMIS users are able to access:

- real time information on disaster trends
- online internal and external resources

International Federation of Red Cross and Red Crescent Societies

DMIS Disaster Management Information System

Home Preparedness **Disaster tracking** Response Toolbox About DMIS

Gloria Pesarin | [My profile](#) | [Logout](#)

### Disaster tracking

**Latest field reports**

| Date      | Country                       | Disaster         | Summary  |
|-----------|-------------------------------|------------------|--|
| 21 May 13 | <a href="#">United States</a> | Local storm      | <a href="#">Oklahoma Tornado</a>                 |
| 21 May 13 | <a href="#">Somalia</a>       | Civil unrest     | <a href="#">Clan fighting in Jowhar Town....</a> |
| 18 May 13 | <a href="#">Panama</a>        | Floods           | <a href="#">Informe Preliminar</a>               |
| 18 May 13 | <a href="#">Colombia</a>      | Epidemic         | <a href="#">Epidemia Dengue</a>                  |
| 17 May 13 | <a href="#">Sri Lanka</a>     | Flash floods     | <a href="#">Floods and Landslides Sri Lanka</a>  |
| 15 May 13 | <a href="#">Myanmar</a>       | Tropical cyclone | <a href="#">Tropical cyclone MAHASEN</a>         |
| 15 May 13 | <a href="#">Zimbabwe</a>      | Epidemic         | <a href="#">Zimbabwe Malaria Outbreak</a>        |

[> view all field reports](#)

**Main ongoing natural hazards**

6 Storms, hurricanes and typhoons - [More](#)

Source: [Tropical Storm Risk](#)

### Disaster types

- [Geophysical](#)
- [Hydrometeorological](#)
- [Meteorological](#)
- [Hydrological](#)
- [Climatological](#)
- [Biological](#)
- [Technological](#)
- [Industrial accident](#)
- [Miscellaneous accident](#)
- [Transport accident](#)
- [Human related](#)

# Other potential data collection options/sources

## ➤ national surveys

- Census
- migration surveys (in country , at station etc....)

## ➤ Administrative registers

- population registers,
- alien registers and consular registers,
- residence permits,
- work permits and asylum applications,
- border collection data (relating to visa types, entry or exit cards and passenger surveys).

## Other potential data sources

- **United Nations High Commissioner for Refugees (UNHCR)**  
<http://www.unhcr.org/pages/49c3646c4d6.html>
- **World Bank** at  
<http://www.worldbank.org> under the data section
- **International Labour Organization (ILO)** at  
<http://www.ilo.org/global/statistics-and-databases/lang--en/index.htm>  
from the Statistics and Databases section
- **Eurostat** at  
(<http://epp.eurostat.ec.europa.eu/portal/page/portal/statistics/themes>)  
under statistics page

---

## *For more information on IFRC Migration work*

---

- Thanks
- IFRC Website: [www.ifrc.org/migration](http://www.ifrc.org/migration)
- Email: [migration.unit@ifrc.org](mailto:migration.unit@ifrc.org)  
or
- [norbert.allale@ifrc.org](mailto:norbert.allale@ifrc.org)